



GENERAL INFORMATION

Dawsons are delighted to offer for sale this mid terrace property situated in Treboeth, Swansea. The property comprises entrance porch, two reception rooms, kitchen, and utility to ground floor. To the first floor there are three bedrooms and a bathroom. Externally the property offers a lawned area to front and an enclosed garden to rear. The property is in superb location to Swansea City Centre, Swansea.com Stadium, Morfa Retail Parc and local schools and amenities. We consider the property an ideal first time buy or family home. Viewing highly recommended.

FULL DESCRIPTION

Ground Floor

Entrance

Hallway

Lounge

13'1" (max) x 10'9" (max)
(3.99m (max) x 3.30m (max))

Dining Room

9'8" x 7'8" (2.97m x 2.36m)

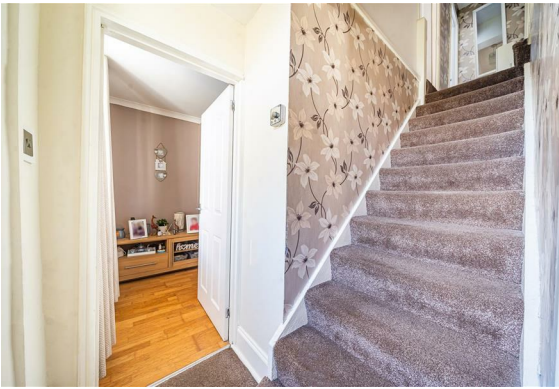
Kitchen

8'0" x 7'8" (2.44m x 2.36m)

Utility

First Floor

Landing



Bedroom 1
12'11" x 10'0" (max) (3.96m x 3.05m (max))

Bedroom 2
12'11" x 9'6" (max) (3.96m x 2.92m (max))

Bedroom 3
9'6" (max) x 8'7" (2.92m (max) x 2.64m)

Bathroom

External

Front Garden

Enclosed Rear Garden

Outbuildings

Shed 1
8'9" x 5'10" (2.67m x 1.78m)

Shed 2
8'2" x 4'7" (2.51m x 1.40m)

Tenure - Freehold

Council Tax Band - B

